

Pathophysiology of lumbar disc degeneration: a review of the literature

**MICHAEL D. MARTIN, M.D., CHRISTOPHER M. BOXELL, M.D., F.A.C.S.,
AND DAVID G. MALONE, M.D.**

Department of Neurological Surgery, University of Oklahoma, Oklahoma City; and Oklahoma Spine and Brain Institute, Tulsa, Oklahoma

Lumbar disc degeneration occurs because of a variety of factors and results in a multitude of conditions. Alterations in the vertebral endplate cause loss of disc nutrition and disc degeneration. Aging, apoptosis, abnormalities in collagen, vascular ingrowth, loads placed on the disc, and abnormal proteoglycan all contribute to disc degeneration. Some forms of disc degeneration lead to loss of height of the motion segment with concomitant changes in biomechanics of the segment. Disc herniation with radiculopathy and chronic discogenic pain are the result of this degenerative process.

KEY WORDS • lumbar • disc • degeneration • pathophysiology • review • anatomy

Lumbar disc degeneration occurs commonly in humans. There are a variety of factors that contribute to this condition. The disc itself is active tissue that contains significant mechanisms for self-repair.²⁶ Reviewing the available literature concerning the normal and abnormal physiology of the disc is useful in understanding why degeneration occurs, why certain conditions are painful, and which mechanisms can be used to prevent further degeneration.

ANATOMY OF THE INTERVERTEBRAL DISC

The intervertebral disc is composed of at least three elements. The central portion of the disc contains the nucleus pulposus, which is composed of cells from the primitive notochord. The outer portion of the disc is the annulus fibrosus, and it is composed of concentric layers of intertwined anular bands. These anular bands are arranged in a specific pattern to resist forces placed on the lumbar spine. The anular bands are subdivided into inner fibers, which are connected to the cartilaginous endplate, and outer Sharpy fibers, which are attached to the VB (Fig. 1). The ALL and PLL further strengthen the disc space. The ALL attaches more strongly to the VB edges than to the annulus. It provides a tension band to resist forces applied in exten-

sion and is a stronger ligament than the PLL. The PLL is not as strong as the ALL, but it provides a tension band to resist flexion forces. The PLL strongly attaches to the annulus fibrosus, and frequently is torn in cases of free fragment disc herniation.

A meningeal branch of the spinal nerve, better known as the recurrent sinuvertebral nerve, innervates the area around the disc space (Fig. 2). This nerve exits from the dorsal root ganglion and enters the foramen, where it then divides into a major ascending and lesser descending branch.⁶ It has been shown in animal studies that further afferent innervation to the sinuvertebral nerve arises via the rami communicantes from multiple superior and inferior dorsal root ganglia.⁴³ In both human and animal studies, the outer anular regions are innervated, but the inner regions and nucleus pulposus are not innervated.^{37,48} In addition studies have demonstrated that the ALL also receives afferent innervation from branches that originate in the dorsal root ganglion.⁷ The PLL is richly innervated by nociceptive fibers from the major ascending branch of the sinuvertebral nerve. These nerves also innervate the adjacent outer layers of the annulus fibrosus.^{7,37} Degenerated human lumbar discs have been shown to contain more nerve tissue and to be more vascular than normal discs.^{9,12,48}

PROTEOGLYCAN AND WATER CONTENT

The strength of the lumbar disc is related to the fluid and proteoglycan content of the disc. Proteoglycan is a

Abbreviations used in this paper: ALL = anterior longitudinal ligament; IL = interleukin; MMP = matrix metalloproteinase; NO = nitric oxide; PG = prostaglandin; PGE = prostaglandin E; PLL = posterior longitudinal ligament; VB = vertebral body.

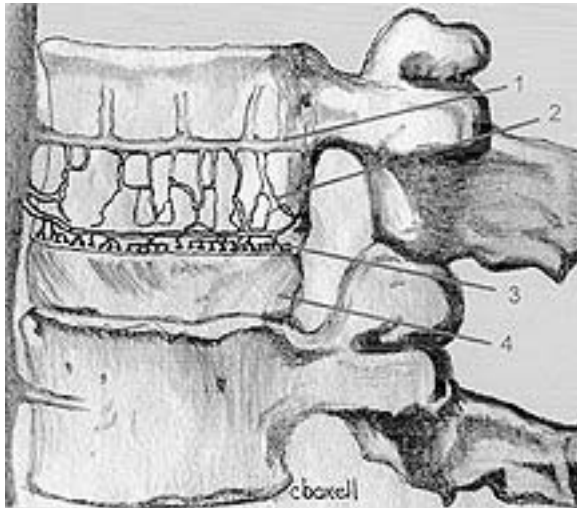


Fig. 1. Artist's illustration showing the vascular supply to the disc space from the cartilaginous endplate. 1 = segmental radicular artery; 2 = interosseous artery; 3 = capillary tuft; and 4 = disc anulus.

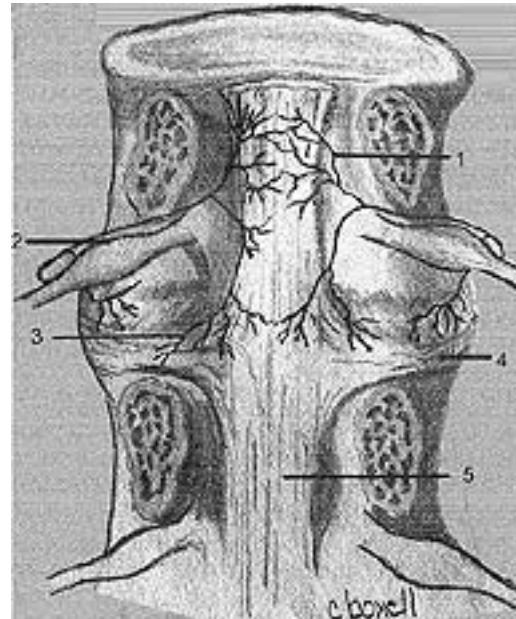


Fig. 2. Artist's illustration showing innervation of the PLL and the disc anulus; 1 = ascending branch of the sinuvertebral nerve; 2 = dorsal root ganglion; 3 = descending branch of the sinuvertebral nerve; 4 = disc anulus; 5 = PLL.

hydrophilic, negatively charged, branched chain molecule composed of a protein attached to an oligosaccharide. Proteoglycans are also known as glycosaminoglycans and include such structures as chondroitin and collagen. The negative charge on the branched chains and the hydrophilic nature of proteoglycan internally pressurize the disc by drawing water via osmosis into the nucleus pulposus. Unfortunately, proteoglycan and therefore water content in the disc tend to decrease with age.^{1-3,51,65} Additionally the amount of hydration within the disc is inversely proportional to applied stress, suggesting that applied spinal loads lead to a loss of hydration and proteoglycan in the disc.⁶⁵ Interestingly, proteoglycan, and thus water content, has also been shown to be low throughout the entire spine in patients with degenerated discs.⁵¹ Studies have shown that applied stress produces degenerative change in the disc; however, it remains unclear whether degeneration in vivo is the result of stress applied to an already biochemically altered disc or a response to stress by an otherwise normal disc. Disc degeneration may have a genetic basis; Sahlman, et al.,⁵⁹ have shown that mice that are heterozygotes for the knockout gene, *Col2a1*, related to Type II collagen, had 4% shorter spines and a decreased concentration of glycosaminoglycans in their endplates, vertebrae, and anuli fibrosis.

Degenerated discs have been demonstrated to vary specifically in the degree of sulfation of chondroitin.²⁷ Degenerated discs lacked adequate sulfation of chondroitin when compared with controls, and the degree of degeneration was greater in higher grade degeneration. The specific disaccharide involved was chondroitin sulfate,⁶ which had been reduced to unsulfated chondroitin in degenerated sections. This study suggested a possible mechanism for the increased incidence of posterior failure of the disc, because the degree of undersulfation was accentuated in the nucleus pulposus as well as the posterior central segment of the anulus fibrosis. Another specific anular proteoglycan, fibromodulin, exhibits a structural

change with increasing age that is characterized by a proportional increase in its glycoprotein form, which lacks keratin sulfate.⁶¹

VASCULARITY OF THE DISC

The disc itself has a low metabolic rate and receives most of its nutrition by diffusion.²⁶ Bulk transport contributes somewhat to nutrition of the disc and this is facilitated by spinal motion.²⁵ The majority of disc nutrition is supplied via the capillary beds of the cartilaginous VB endplate.¹⁰ Blood flow to these capillary beds is under humoral control, which increases with application of acetylcholine.⁶⁸ Early research suggests muscarinic receptors exist on the cartilaginous endplate, implying a possible mechanism of the negative effects of nicotine on the endplate.⁶⁸ These capillary beds receive blood flow from the distal branches of the interosseous arteries supplying the VB. Disruption of the cartilaginous endplate leads to formation of Schmorl nodes.⁵⁴ Vascular and lymphatic tissue is present in the anulus of patients who are as old as age 20 years; however, lymphatics and blood vessels are not present in the nucleus pulposus at any age.⁵⁶ The concentration of oxygen has been found to be greatest at the disc edge, and the concentration of lactate is greatest in the center, which is the portion of the disc farthest from the blood supply.⁴ Although the concentrations of oxygen and lactate vary widely from person to person, they do not seem to change in pathological states.⁴

Changes in the vascular supply appear in disc degeneration. Normal anastomotic arteries on the anterolateral surface are obliterated and replaced by small, tortuous arteries in degenerated anuli.³³ The arterial changes occur before the degenerative process and may be related to the

Pathophysiology of lumbar disc degeneration

ingrowth of vessels from osteophyte formation.³³ This implies a relationship between nutrition to the disc and subsequent disease. Some authors believe that neovascularity occurs in response to injury as an attempt to supply the damaged portion of the disc with nutrients.⁶⁶ Others suggest that vascularization of the annulus occurs in response to trauma and that the new vessels are associated with endothelial cells, fibroblasts, and mononuclear cells.⁵³ Surgical specimens have been compared with those from normal cadaveric disc and it has been found that the vasculature of normal discs was not associated with additional cells, but instead with an inactive collagen matrix.⁵³ Both macrophages and blood vessels have been found to be prominent in herniated disc fragments, but the presence or absence of these entities could not be correlated with the timing of radicular pain.⁶⁷

COLLAGEN DISTRIBUTION

Collagen is a widely distributed proteoglycan in the body. Type I collagen is usually found in skin, bone, tendon, and dentin. Types II and IX are normally found in hyaline cartilage and vitreous humor. Type III collagen can be found in skin and blood vessels. Type VI is found in most interstitial tissues. Type I collagen is found in the nucleus pulposus and annulus fibrosus in both normal and pathologically degenerated discs, whereas Type II and IX collagen are found to be increased in areas of minor degeneration but absent in areas of more advanced disease.⁴⁴ In contrast, Lotz, et al.,⁴⁰ found that Type II collagen is decreased at all levels of applied mechanical stress. In another study the total amount of collagen was found to be highest in patients 5 to 15 years of age, and in this study the amount of denatured Type II was decreased in degenerated discs.^{2,3} Types III and VI were increased in areas of degeneration regardless of the degree.⁴⁴ A marker of oxidative stress related to modification of the protein structure of collagen, *N*-(carboxymethyl)lysine, has been shown to increase with advancing degenerative disease.⁴⁵

Additional studies of the collagen composition of the disc have revealed the importance of collagen crosslinks to the mechanical stability of the intervertebral disc. A decrease in the presence of pyridinoline and an increase in pentosidine within the disc are associated with aging.⁵² The concentration of pyridinoline found in patients older than 65 years was approximately 50% of that found in younger people. Decreases in pyridinoline crosslinks lead to alterations in the collagen matrix of the disc. Cells in the disc have the potential to produce a matrix that is inappropriate for the mechanical stresses placed on it.²⁰

It has also been suggested that matrix degeneration within the nucleus may result from the increase in certain proteinases that do not appear in the normal disc. Leukocyte elastase, which is normally found in the VB, may be at least partially responsible for the degeneration of the extracellular matrix in the annulus, nucleus, and endplate.¹³

ROLE OF APOPTOSIS

Apoptosis is programmed cell death and occurs in both normal and pathological states. The role of apoptosis in lumbar disc degeneration is not fully understood. It is ap-

parent that an inappropriate disc matrix is produced in degenerated lumbar discs.²⁰ This inappropriate matrix may isolate cells in the disc and lead to apoptosis. Further experimentation has indicated that apoptosis occurs at a higher rate in cases of free disc fragments compared with contained disc herniations.⁵⁰ This increased rate of apoptosis in free disc herniations may be a possible mechanism of resorption and remodeling of the extruded material. In vitro evidence suggests that certain cytokines, namely insulin-like growth factor-1 and platelet-derived growth factor, can inhibit apoptosis in cell cultures of disc material.²¹ In vivo experiments indicate that disc tissue responds in an autocrine fashion; that is, the cells release substances to which the cells themselves respond.^{31,36,49} This has been shown to be different in degenerated compared with normal disc tissue, and it has been hypothesized that these substances can lead to disc degeneration.^{36,49} These studies all indicate that the disc is much more active biologically than previously thought, and further research may provide pharmacological means to change the natural history of disc degeneration.

MECHANICAL STRESS AND INFLAMMATORY COMPONENTS

Authors of multiple studies have evaluated mechanical stress as applied to the intervertebral disc. Disc degeneration is related to mechanical stresses. Degeneration may begin in early adulthood and may change the disc in such a way that herniation is imminent.²³ The levels most commonly affected are L4-5 and L5-S1. Although degeneration at one of these two levels is correlated with disease at the other, there is no correlation with disease in facet joints.¹⁷ Disease in either the facet joints or the disc is not reliably correlated with patient age. Stress in the vertebral column is transmitted mostly to the endplates of the VB and less to the core of the body.³⁹ In healthy individuals the stress is transmitted from the center of the endplate, whereas in a degenerative state, stress is transmitted more to the peripheral rather than the central aspects of the VB. This is thought to be due to the loss of hydration of the nucleus pulposus that accompanies aging.³⁹

Other biomechanical studies have focused on the effect of applied stress. A study in which cadaveric disc was used and with motion was applied in flexion-extension, axial rotation, and lateral bending showed that the laxity of a degenerated disc is increased and the range of motion is decreased.⁴¹ Spine flexibility and, thus range of motion, was shown to be reduced in degeneration because of the increasing size of the endplate and the decreasing height of the intervertebral disc space. The increased laxity of the motion segment was found to be due to decreased disc height of the nucleus with resultant loss of tension of the surrounding ligaments.⁴¹ When intradiscal pressure is increased, degenerated discs herniate at lower pressures than normal discs.²⁸ It may be possible that a certain critical pressure exists above which the stressed annulus is unable to counteract the force applied, resulting in rupture.²⁸ Umehara, et al.,⁶⁴ reported that the annulus in degenerated discs is abnormal and that its elastic modulus is lowest in the posterolateral section of the disc. The same group demonstrated that symmetry and regularity of the

elastic modulus decrease as the grade of degeneration increases. Others have shown that the degenerated disc had reduced ability to withstand applied stress and that the section of anulus most responsible for this is the middle portion.¹⁴

Applied stress may trigger certain biochemical events within the disc. Degenerated discs have higher than normal concentrations of fibronectin, which may be elevated as part of the response to injury.⁴⁷ This may translate to an increase in proteolytic activity.⁴⁷ Mechanical stress has also been shown to increase the activity of MMPs 2 and 9 in articular cartilage, indicating an increase in tissue turnover that has the potential to weaken the disc.⁵ Increases in MMPs, NO, PGE-2, and IL-6 are also seen in herniated discs.³² Cathepsin G, a proteinase with a wide variety of biochemical actions, has been shown to be increased in the anulus of degenerated discs.³⁸ It has also been suggested that applied stress may decrease the expression of Type II collagen and result in disorganization of the anulus fibrosus.⁴⁰

The herniated disc also induces an inflammatory response. In a dog model with autologous implantation of both nucleus and anulus, Hasegawa and colleagues²⁴ showed that nucleus fragments induce an inflammatory reaction. The number of lymphocytes, macrophages, and fibroblasts was markedly increased in samples from older dogs.²⁴ Others have examined human samples, finding that macrophages are the most commonly found cell type in both acute and chronic herniation.^{19,22,29} Despite this finding, evidence of macrophage infiltration does not correlate with clinical symptoms in humans.⁵⁵ Interestingly, the presence of inflammation in patients does correlate with a better postoperative outcome when compared with those with herniated discs showing no inflammation.⁶⁹ A study in rats revealed an increase in the expression of IL-1 β , IL-6, and NO synthetase 1 week after implantation of nucleus fragments.³⁵ Further progression of the inflammatory response may be caused by IL-1 β ; the addition of this cytokine to normal disc tissue in vitro causes an increase in MMPs, IL-6, PGE-2, and NO.³² Degradation of the proteins in the extracellular matrix of the disc may also be caused by MMP's. Other inflammatory mediators, such as IL-1 α and tumor necrosis factor- β , are also present in the herniated disc and may increase the amount of PGE-2.⁶² The painful disc may be the result of the effect of PGE-2, and, in fact, a positive straight-leg raise result has been correlated with the amount of PGE-2.⁴⁶ Some controversy exists as to whether levels of tumor necrosis factor- α and phospholipase A2 are increased in the herniated disc.^{11,18,57,58}

In addition to the inflammatory mediators already mentioned, authors of one study found that two thirds of patients with lumbar disc disease and radicular symptoms had an increase in antiglycosphingolipid antibodies, suggesting an autoimmune component to lumbar disc disease.⁸ Another group of authors showed that there are antigen-antibody complexes present in the herniated disc, although no conclusions were made regarding their clinical significance.⁶⁰ The theory that there is an autoimmune component to lumbar disc disease is controversial; others authors have demonstrated a lack of cells that were expected in an antigen-specific inflammatory response,

although the number of macrophages is known to be increased.^{22,34}

DISC HERNIATION

It has been widely held that symptoms of lumbar disc disease are the result of either herniation of the nucleus pulposus through a mechanically weak anulus fibrosis or from tearing of the anulus itself. This can lead to radiculopathy from nerve root compression or an inflammatory process affecting nerve roots or the spinal cord. Herniation is thought to be the result of a defect in the anulus fibrosis, most likely the result of excessive stress applied to the disc.¹⁵ Histological evaluation has revealed that whatever the cause of the tear, the extruded portion always involves material from the nucleus pulposus.⁴² Herniation most often occurs on the posterior or posterolateral aspect of the disc.²⁸ Morphological characteristics, namely the arrangement of the anular fiber bundles, seem to contribute to the propensity for disc herniation on the posterior aspect of the disc. This directs the herniation toward the exiting and traversing nerve roots.⁶³

The degree of disease in the lumbar spine is characterized by the location of the abnormal portion of the disc.³⁰ A disc bulge is a symmetrical extension of the disc beyond the endplates, whereas a protrusion is a focal area of extension still attached to the disc.^{16,30} An extruded fragment is one that is no longer connected to the disc, and a sequestered fragment is contained within the PLL.^{16,30}

CONCLUSIONS

The lumbar discs most often affected by degeneration that leads to herniation are L4-5 and L5-S1, most probably because of a combination of longstanding degeneration and a subsequent change in the ability of the disc to resist applied stress. Discs that are degenerated show abnormal vascularity, and abnormal distribution of collagen and collagen crosslinks. They also show an abnormal and nonuniform elastic modulus that distributes stress to critical portions of the disc. Radicular pain is often associated with disc herniation, which may be due, in part, to an inflammatory response to the portion of nucleus that has been extruded. This inflammation is characterized by an increase in the number of macrophages and an increase in IL-1 β , with a subsequent release of PGE-2. Although the relative importance of these diverse pathological changes is unclear, it is clear that lumbar disc degeneration and herniation are multifactorial processes and that both mechanical and biochemical derangements exist.

References

1. Adams MA, McNally DS, Dolan P: 'Stress' distributions inside intervertebral discs. The effects of age and degeneration. *J Bone Joint Surg Br* 78:965-972, 1996
2. Antoniou J, Goudsouzian NM, Heathfield TF, et al: The human lumbar endplate. Evidence of changes in biosynthesis and denaturation of the extracellular matrix with growth, maturation, aging, and degeneration. *Spine* 21:1153-1161, 1996
3. Antoniou J, Steffen T, Nelson F, et al: The human lumbar intervertebral disc: evidence for changes in the biosynthesis and de-

Pathophysiology of lumbar disc degeneration

- naturation of the extracellular matrix with growth, maturation, ageing, and degeneration. **J Clin Invest** **98**:996–1003, 1996
4. Bartels EM, Fairbank JC, Winlove CP, et al: Oxygen and lactate concentrations measured in vivo in the intervertebral discs of patients with scoliosis and back pain. **Spine** **23**:1–8, 1998
 5. Blain EJ, Gilbert SJ, Wardale RJ, et al: Up-regulation of matrix metalloproteinase expression and activation following cyclical compressive loading of articular cartilage in vitro. **Arch Biochem Biophys** **396**:49–55, 2001
 6. Bogduk N: The anatomy of the lumbar intervertebral disc syndrome. **Med J Aust** **1**:878–881, 1976
 7. Bogduk N, Tynan W, Wilson AS: The nerve supply to the human lumbar intervertebral discs. **J Anat** **132**:39–56, 1981
 8. Brisby H, Balague F, Schafer D, et al: Glycosphingolipid antibodies in serum in patients with sciatica. **Spine** **27**:380–386, 2002
 9. Coppes MH, Marani E, Thomeer RT, et al: Innervation of "painful" lumbar discs. **Spine** **22**:2342–2350, 1997
 10. Crock HV, Goldwasser M: Anatomic studies of the circulation in the region of the vertebral end-plate in adult Greyhound dogs. **Spine** **9**:702–706, 1984
 11. Doita M, Kanatani T, Harada T, et al: Immunohistologic study of the ruptured intervertebral disc of the lumbar spine. **Spine** **21**:235–241, 1996
 12. Freemont AJ, Peacock TE, Goupille P, et al: Nerve ingrowth into diseased intervertebral disc in chronic back pain. **Lancet** **350**:178–181, 1997
 13. Fujita K, Nakagawa T, Hirabayashi K, et al: Neutral proteinases in human intervertebral disc. Role in degeneration and probable origin. **Spine** **18**:1766–1773, 1993
 14. Fujita Y, Duncan NA, Lotz JC: Radial tensile properties of the lumbar annulus fibrosus are site and degeneration dependent. **J Orthop Res** **15**:814–819, 1997
 15. Gordon SJ, Yang KH, Mayer PJ, et al: Mechanism of disc rupture. A preliminary report. **Spine** **16**:450–456, 1991
 16. Greenberg MS: **Handbook of Neurosurgery**, ed 5. New York: Thieme, 2001, p 289
 17. Gries NC, Berlemann U, Moore RJ, et al: Early histologic changes in lower lumbar discs and facet joints and their correlation. **Eur Spine J** **9**:23–29, 2000
 18. Gronblad M, Virri J, Ronkko S, et al: A controlled biochemical and immunohistochemical study of human synovial-type (Group II) phospholipase A2 and inflammatory cells in macroscopically normal, degenerated, and herniated human lumbar disc tissues. **Spine** **21**:2531–2538, 1996
 19. Gronblad M, Virri J, Tolonen J, et al: A controlled immunohistochemical study of inflammatory cells in disc herniation tissue. **Spine** **19**:2744–2751, 1994
 20. Gruber HE, Hanley EN Jr: Analysis of aging and degeneration of the human intervertebral disc. Comparison of surgical specimens with normal controls. **Spine** **23**:751–757, 1998
 21. Gruber HE, Norton HJ, Hanley EN Jr: Anti-apoptotic effects of IGF-1 and PDGF on human intervertebral disc cells in vitro. **Spine** **25**:2153–2157, 2000
 22. Habtemariam A, Gronblad M, Virri J, et al: A comparative immunohistochemical study of inflammatory cells in acute-stage and chronic-stage disc herniations. **Spine** **23**:2159–2166, 1998
 23. Hadjipavlou AG, Simmons JW, Pope MH, et al: Pathomechanics and clinical relevance of disc degeneration and annular tear: a point-of-view review. **Am J Orthop** **28**:561–571, 1999
 24. Hasegawa T, An HS, Inufusa A, et al: The effect of age on inflammatory responses and nerve root injuries after lumbar disc herniation: an experimental study in a canine model. **Spine** **25**:937–940, 2000
 25. Holm S, Nachemson A: Variations in the nutrition of the canine intervertebral disc induced by motion. **Spine** **8**:866–874, 1983
 26. Humzah MD, Soames RW: Human intervertebral disc: structure and function. **Anat Rec** **220**:337–356, 1988
 27. Hutton WC, Elmer WA, Boden SD, et al: Analysis of chondroitin sulfate in lumbar intervertebral discs at two different stages of degeneration as assessed by discogram. **J Spinal Disord** **10**:47–54, 1997
 28. Jencean SM: Lumbar intervertebral disc herniation following experimental intradiscal pressure increase. **Acta Neurochir** **142**:669–676, 2000
 29. Ikeda T, Nakamura T, Kikuchi T, et al: Pathomechanism of spontaneous regression of the herniated lumbar disc: histologic and immunohistochemical study. **J Spinal Disord** **9**:136–140, 1996
 30. Jensen MC, Brant-Zawadzki MN, Obuchowski N, et al: Magnetic resonance imaging of the lumbar spine in people without back pain. **N Engl J Med** **331**:69–73, 1994
 31. Kang JD, Georgescu HI, McIntyre-Larkin L, et al: Herniated lumbar intervertebral discs spontaneously produce matrix metalloproteinases, nitric oxide, interleukin-6, and prostaglandin E2. **Spine** **21**:271–277, 1996
 32. Kang JD, Stefanovic-Racic M, McIntyre LA, et al: Toward a biochemical understanding of human intervertebral disc degeneration and herniation. Contributions of nitric oxide, interleukins, prostaglandin E2, and matrix metalloproteinases. **Spine** **22**:1065–1073, 1997
 33. Kauppila LI: Ingrowth of blood vessels in disc degeneration. Angiographic and histological studies of cadaveric spines. **J Bone Joint Surg Am** **77**:26–31, 1995
 34. Kawaguchi S, Yamashita T, Yokogushi K, et al: Immunophenotypic analysis of the inflammatory infiltrates in herniated intervertebral discs. **Spine** **26**:1209–1214, 2001
 35. Kawakami M, Matsumoto T, Kuribayashi K, et al: mRNA expression of interleukins, phospholipase A2, and nitric oxide synthase in the nerve root and dorsal root ganglion induced by autologous nucleus pulposus in the rat. **J Orthop Res** **17**:941–946, 1999
 36. Kohyama K, Saura R, Doita M, et al: Intervertebral disc cell apoptosis by nitric oxide: biological understanding of intervertebral disc degeneration. **Kobe J Med Sci** **46**:283–295, 2000
 37. Kojima Y, Maeda T, Arai R, et al: Nerve supply to the posterior longitudinal ligament and the intervertebral disc of the rat vertebral column as studied by acetylcholinesterase histochemistry. I. Distribution in the lumbar region. **J Anat** **169**:237–246, 1990
 38. Konttinen YT, Kaapa E, Hukkanen M, et al: Cathepsin G in degenerating and healthy discal tissue. **Clin Exp Rheumatol** **17**:197–204, 1999
 39. Kurowski P, Kubo A: The relationship of degeneration of the intervertebral disc to mechanical loading conditions on lumbar vertebrae. **Spine** **11**:726–731, 1986
 40. Lotz JC, Colliou OK, Chin JR, et al: Compression-induced degeneration of the intervertebral disc: an in vivo mouse model and finite-element study. **Spine** **23**:2493–2506, 1998
 41. Mimura M, Panjabi MM, Oxland TR, et al: Disc degeneration affects the multidirectional flexibility of the lumbar spine. **Spine** **19**:1371–1380, 1994
 42. Moore RJ, Vernon-Roberts B, Fraser RD, et al: The origin and fate of herniated lumbar intervertebral disc tissue. **Spine** **21**:2149–2155, 1996
 43. Morinaga T, Takahashi K, Yamagata M, et al: Sensory innervation to the anterior portion of lumbar intervertebral disc. **Spine** **21**:1848–1851, 1996
 44. Nerlich AG, Boos N, Wiest I, et al: Immunolocalization of major interstitial collagen types in human lumbar intervertebral discs of various ages. **Virchows Arch** **432**:67–76, 1998
 45. Nerlich AG, Schleicher ED, Boos N: 1997 Volvo Award winner in basic science studies. Immunohistologic markers for age-related changes of human lumbar intervertebral discs. **Spine** **22**:2781–2795, 1997
 46. O'Donnell JL, O'Donnell AL: Prostaglandin E2 content in herniated lumbar disc disease. **Spine** **21**:1653–1656, 1996

47. Oegema TR Jr, Johnson SL, Aguiar DJ, et al: Fibronectin and its fragments increase with degeneration in the human intervertebral disc. **Spine** **25**:2742–2747, 2000
48. Palmgren T, Gronblad M, Virri J, et al: An immunohistochemical study of nerve structures in the annulus fibrosus of human normal lumbar intervertebral discs. **Spine** **24**:2075–2079, 1999
49. Park JB, Chang H, Kim KW: Expression of Fas ligand and apoptosis of disc cells in herniated lumbar disc tissue. **Spine** **26**:618–621, 2001
50. Park JB, Kim KW, Han CW, et al: Expression of Fas receptor on disc cells in herniated lumbar disc tissue. **Spine** **26**:142–146, 2001
51. Pearce RH, Grimmer BJ, Adams ME: Degeneration and the chemical composition of the human lumbar intervertebral disc. **J Orthop Res** **5**:198–205, 1987
52. Pokharna HK, Phillips FM: Collagen crosslinks in human lumbar intervertebral disc aging. **Spine** **23**:1645–1648, 1998
53. Repanti M, Korovessis PG, Stamatakis MV, et al: Evolution of disc degeneration in lumbar spine: a comparative histological study between herniated and postmortem retrieved disc specimens. **J Spinal Disord** **11**:41–45, 1998
54. Roberts S, Menage J, Urban JP: Biochemical and structural properties of the cartilage end-plate and its relation to the intervertebral disc. **Spine** **14**:166–174, 1989
55. Rotherl RD, Woertgen C, Holzschuh M, et al: Is there a clinical correlate to the histologic evidence of inflammation in herniated lumbar disc tissue? **Spine** **23**:1197–1201, 1998
56. Rudert M, Tillmann B: Lymph and blood supply of the human intervertebral disc. Cadaver study of correlations to discitis. **Acta Orthop Scand** **64**:37–40, 1993
57. Saal JS: The role of inflammation in lumbar pain. **Spine** **20**:1821–1827, 1995
58. Saal JS, Franson RC, Dobrow R, et al: High levels of inflammatory phospholipase A2 activity in lumbar disc herniations. **Spine** **15**:674–678, 1990
59. Sahlman J, Inkinen R, Hirvonen T, et al: Premature vertebral endplate ossification and mild disc degeneration in mice after inactivation of one allele belonging to the Col2a1 gene for Type II collagen. **Spine** **26**:2558–2565, 2001
60. Satoh K, Konno S, Nishiyama K, et al: Presence and distribution of antigen-antibody complexes in the herniated nucleus pulposus. **Spine** **24**:1980–1984, 1999
61. Sztrolovics R, Alini M, Mort JS, et al: Age-related changes in fibromodulin and lumican in human intervertebral discs. **Spine** **24**:1765–1771, 1999
62. Takahashi H, Suguro T, Okazima Y, et al: Inflammatory cytokines in the herniated disc of the lumbar spine. **Spine** **21**:218–224, 1996
63. Tsuji H, Hirano N, Ohshima H, et al: Structural variation of the anterior and posterior annulus fibrosus in the development of human lumbar intervertebral disc. A risk factor for intervertebral disc rupture. **Spine** **18**:204–210, 1993
64. Umehara S, Tadano S, Abumi K, et al: Effects of degeneration on the elastic modulus distribution in the lumbar intervertebral disc. **Spine** **21**:811–820, 1996
65. Urban JP, McMullin JF: Swelling pressure of the lumbar intervertebral discs: influence of age, spinal level, composition, and degeneration. **Spine** **13**:179–187, 1988
66. Virri J, Gronblad M, Savikko J, et al: Prevalence, morphology, and topography of blood vessels in herniated disc tissue. A comparative immunocytochemical study. **Spine** **21**:1856–1863, 1996
67. Virri J, Sikk S, Gronblad M, et al: Concomitant immunocytochemical study of macrophage cells and blood vessels in disc herniation tissue. **Eur Spine J** **3**:336–341, 1994
68. Wallace AL, Wyatt BC, McCarthy ID, et al: Humoral regulation of blood flow in the vertebral endplate. **Spine** **19**:1324–1328, 1994
69. Woertgen C, Rotherl RD, Brawanski A: Influence of macrophage infiltration of herniated lumbar disc tissue on outcome after lumbar disc surgery. **Spine** **25**:871–875, 2000

Manuscript received June 24, 2002.

Accepted in final form July 3, 2002.

Address reprint requests to: David G. Malone, M.D., Oklahoma Spine and Brain Institute, 1919 South Wheeling, Tulsa, Oklahoma 74104. email: xmalone@cox.net.